

INTENTIONALLY

LEFT

BLANK

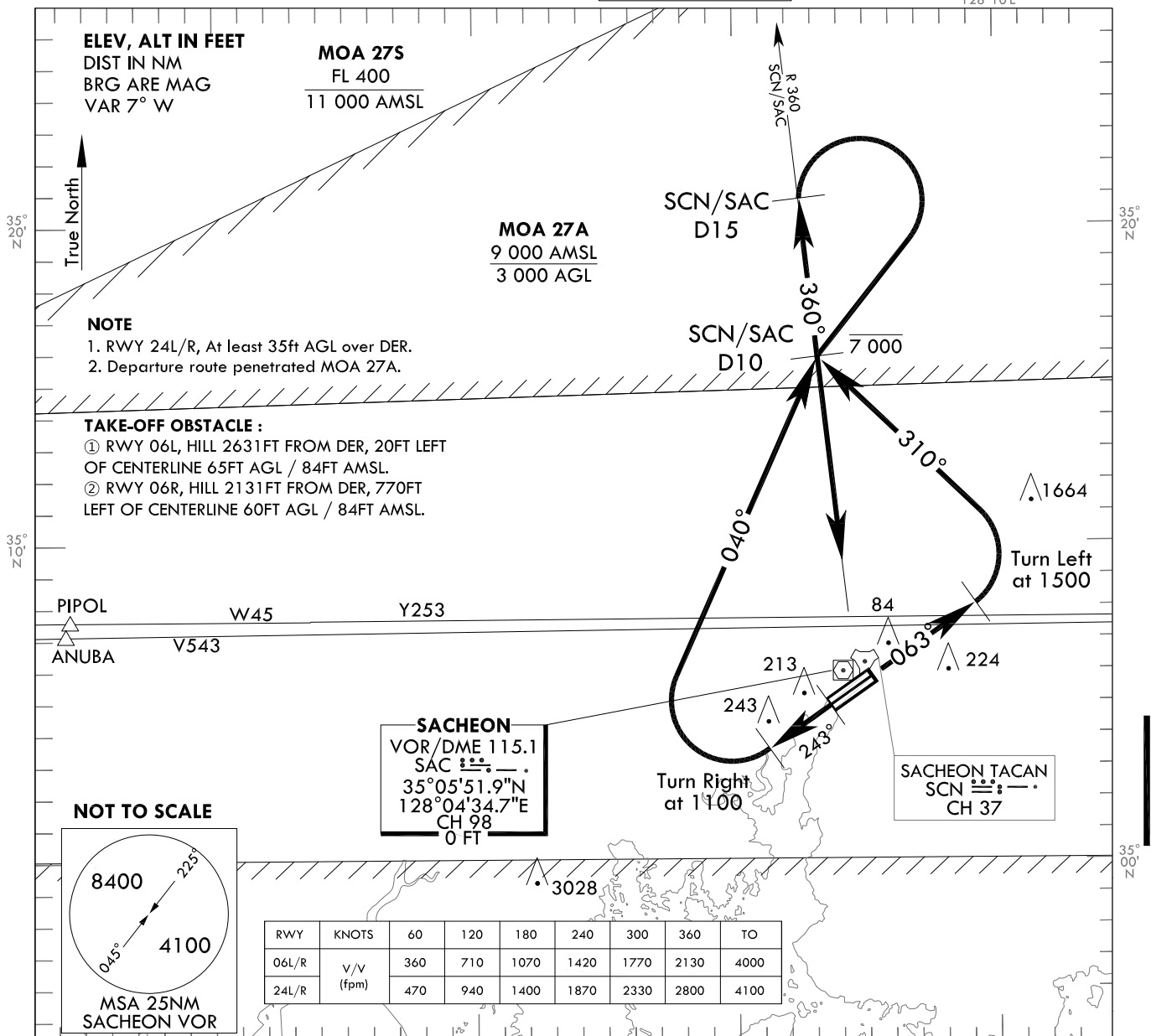
**STANDARD DEPARTURE
CHART - INSTRUMENT(SID)**

TRANSITION ALT 14 000
TRANSITION LVL FL 140

SACHEON DEP 135.4
347.3
SACHEON TWR 126.2
236.6

**SACHEON (RKPS)
RWY 06L/R, 24L/R
SACHEON 6**

Note : Departures under U.S. TERPS.



DEPARTURE ROUTE DESCRIPTION

TAKE OFF RWY 06L/R : Climb heading 063 to 1500ft, then left turn heading 310° to intercept R 360 SCN or R 360 SAC thence.....

TAKE OFF RWY 24L/R : At least 35ft AGL over DER, Climb heading 243 to 1100ft, then right turn heading 040 to intercept R 360 SCN or R 360 SAC, thence.....

..... track outbound on R 360 SCN/SAC and cross SCN/SAC D10 at or below 7000ft, then on depicted route and climb to assigned altitude or as directed by ATC.

Change : Information of Sacheon VOR(SAC).

INTENTIONALLY

LEFT

BLANK

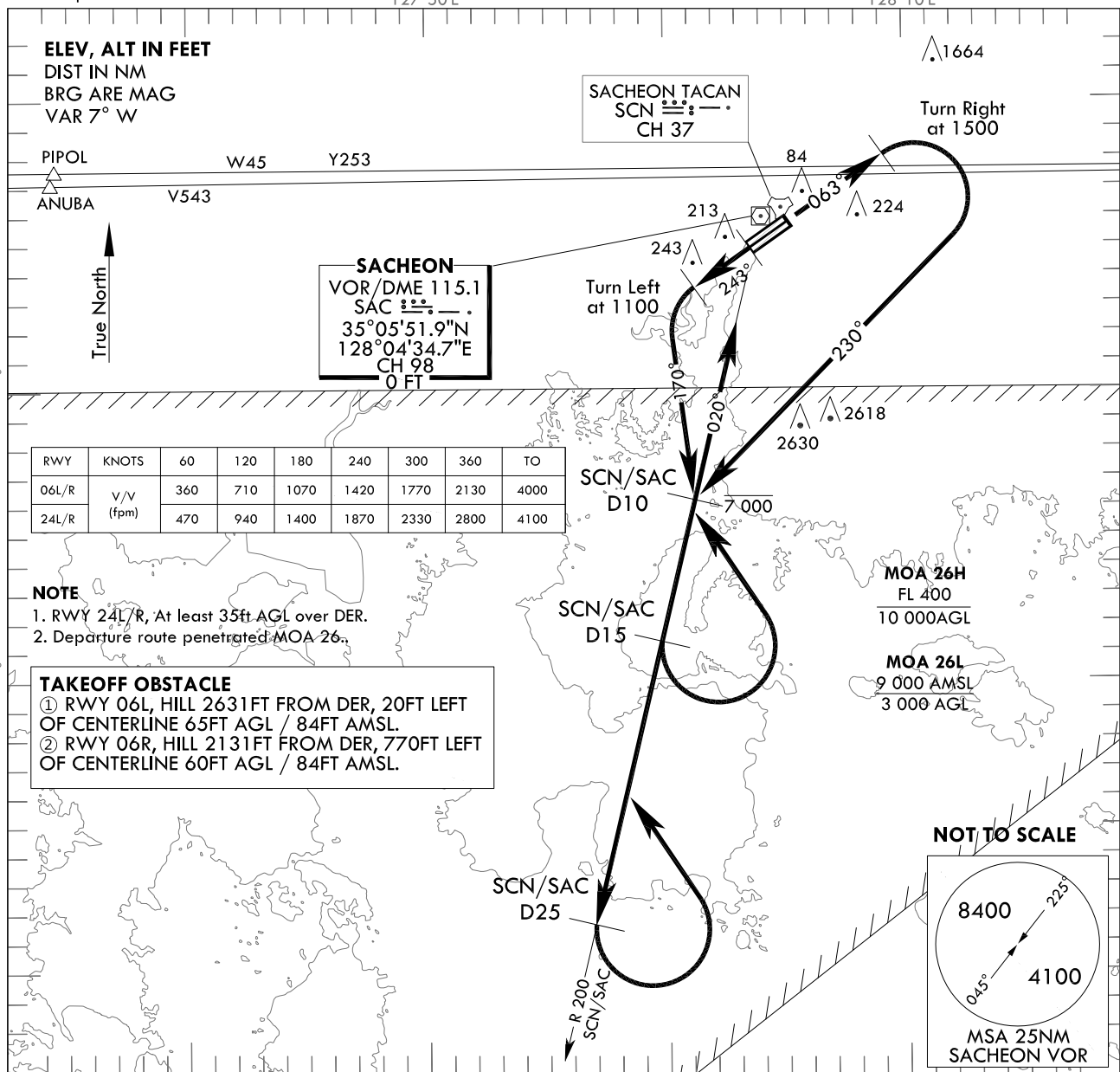
**STANDARD DEPARTURE
CHART - INSTRUMENT(SID)**

TRANSITION ALT 14 000
TRANSITION LVL FL 140

SACHEON DEP 135.4
347.3
SACHEON TWR 126.2
236.6

SACHEON (RKPS)
RWY 06L/R, 24L/R
SACHEON 7

Note : Departures under U.S. TERPS.



- NOTE**
1. RWY 24L/R, At least 35ft AGL over DER.
 2. Departure route penetrated MOA 26.

TAKEOFF OBSTACLE

- ① RWY 06L, HILL 2631FT FROM DER, 20FT LEFT OF CENTERLINE 65FT AGL / 84FT AMSL.
- ② RWY 06R, HILL 2131FT FROM DER, 770FT LEFT OF CENTERLINE 60FT AGL / 84FT AMSL.

DEPARTURE ROUTE DESCRIPTION

TAKE OFF RWY 06L/R : Climb heading 063° to 1500ft, then right turn heading 230° to intercept R 200 SCN or R 200 SAC thence.....

TAKE OFF RWY 24L/R : At least 35ft AGL over DER, Climb heading 243° to 1100ft, then left turn heading 170° to intercept R 200 SCN or R 200 SAC, thence.....

..... track outbound on R 200 SCN/SAC and cross SCN/SAC D10 at or below 7000ft, then on depicted route and climb to assigned altitude or as directed by ATC.

INTENTIONALLY

LEFT

BLANK